

Kimono Jacket

MODEL DESCRIPTION

The oversized kimono jacket with cropped, slightly shortened sleeves closes with press studs.

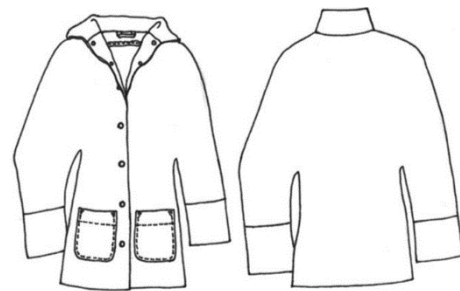
The jacket has a stand-up collar and attached pockets.

The jacket is unlined, the seams have been finished with bias tape on the inside.

Length (size S): 80 cm;

Sleeve length (measured from neck hole!): 67cm

MODEL DRAWING



Front

Back

MATERIAL LIST

OUTER FABRIC:

Professional tip for buying fabric:

Many different materials are possible here: coat fleece, wool mix, tweed, flannel, even gabardine for a summer jacket can be used.

You can use, for example, the following materials:

Loden
Fleece
Boucle
Faux fur

BIAS TAPE:

Either buy ready-made bias tape, e.g. 4 metres of bias tape.

Or you can make your own bias strips from lining fabric with the help of a bias tape former (e.g. 18 mm wide). You will also need: 30 cm lining taffeta

BUTTONS:

5-6 pcs* (press) buttons, 2-3 cm diameter

**for larger buttons 5 pcs are enough, for smaller buttons it looks better to use 6 buttons.*

Tip: When hammering in the snap fastener, read and follow the instructions included beforehand! They may differ from our instructions.

EDGE TAPE:

T20*

** Lightweight, fusible tape made of 100% polyamide with stabilising longitudinal threads made of polyamide, 43g/m2*

Tip: we use edge tape 1 cm wide, but this is rarely available in shops. You can also buy the suggested edge tape with a width of 2 cm and cut it in half. It is particularly suitable for stabilizing straight edges such as the shoulder seam or front edge. If you use it in curves you have to iron it on with a few folds, which is no problem.

HEMMING TAPE:

T40

Tip: Only needed if you do not want to sew the hem with an invisible seam or sewing machine as shown in the video.

FABRIC REQUIREMENTS (fabric width 1.40m)

OUTER FABRIC:

(Measurements in meters, fabric width 1,4 m)

Size	XS	S	M	L	XL
Outer fabric	2,3	2,4	2,4	2,5	2,5
Outer fabric with design*	2,5	2,5	2,7	2,7	2,85

* If the outer fabric or lining has a one-sided/standing pattern, pile or line, you often need more fabric because all the pattern pieces have to lie in the same direction - but with this cut you need the same amount of fabric. Only buy an additional repeat (=distance from pattern to pattern) for striking patterns and checks.

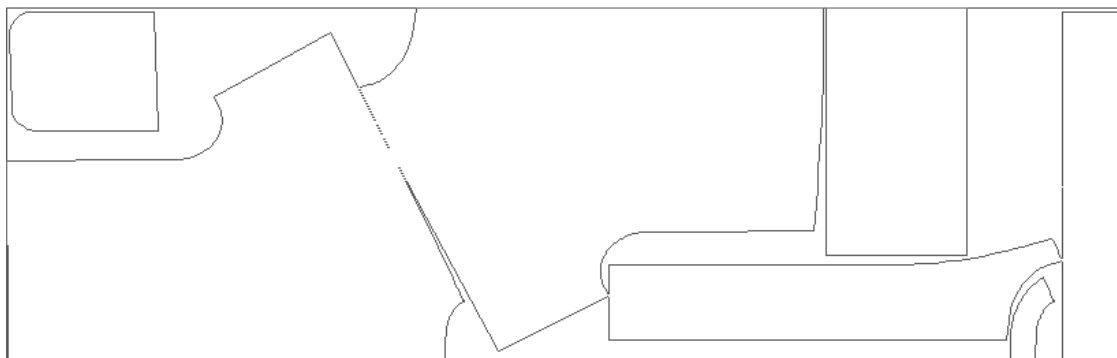
SELECTING THE SIZE/ PATTERN

For this cut, choose the size closest to your bust circumference. The jacket is cut very oversized and casual, so you don't need to adjust the waist and hips.

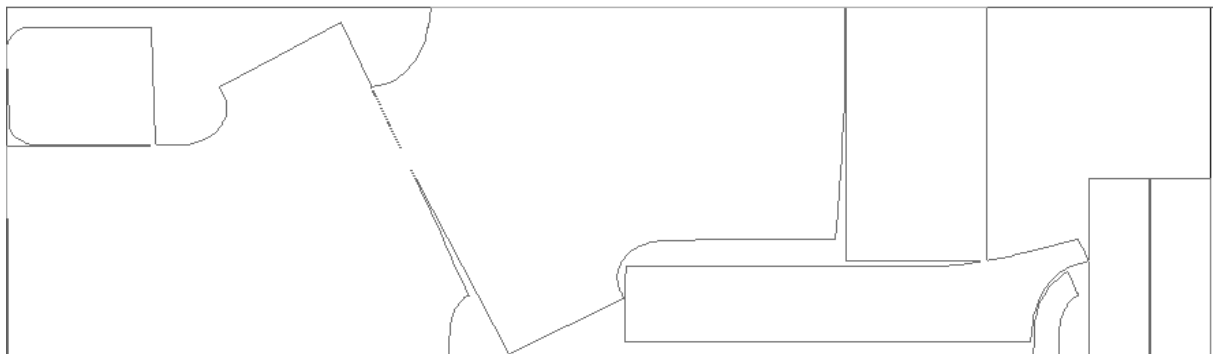
Size	XS	S	M	L	XL
Equals the size	32/34	36/38	40/42/44	46/48	50/52
Bust circumference (body measurement)	82-86cm	90-94cm	98-106cm	112-118cm	124-130cm

CUTTING POSITION

SizeXS – SizeL (When cutting the collar, fold over at the fold and cut open.)



SizeXL



WHEN YOU ARE FINISHED

We are always thrilled when we discover photos of your work under #schneiderakademie #tailoracademy and #schneiderfamilie on Instagram or Facebook! ✂️🧵